

# LAZBJ-10Q 电流互感器

Current transformer



## 型号含义 Meaning of Model



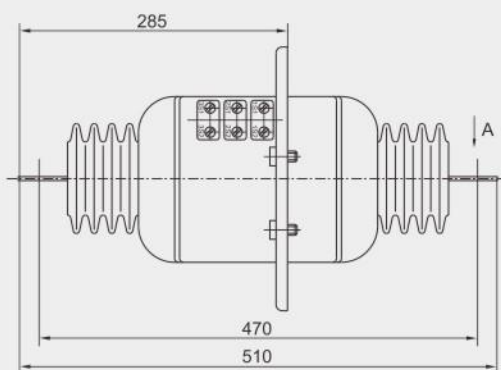
## 技术参数 Technical data

额定一次电流 Rated primary current (A)	准确级组合 Accuracy classes combination	额定二次输出 Rated secondary output(VA)					一秒热稳定电流 1s thermal current (kA)	动稳定电流 Rated dynamic current (kA)
		0.2S	0.5S	0.2	0.5	10P10		
5-200	0.2(S)/10P10 0.5(S)/10P10 0.2(S)/10P15 0.5(S)/10P15	10	10	10	15	15	90I <sub>n</sub>	200I <sub>n</sub>
300、400							24.5	44
500			10	20*	15	15	32	80
600			15*				32	80
800-1000							63	100

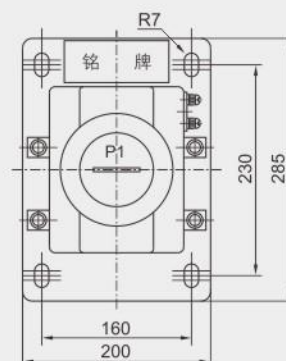
注：代替LAJ-10时的表中参数，测量级为带\*数据，保护级为10P15。

Note: Parameters in the table instead of LAJ-10: The measurement grade is the data marked with\*, the protection grade is 10P15.

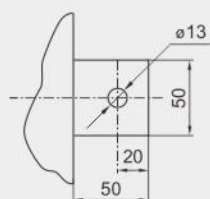
## 外形及安装尺寸 Overall dimension drawing



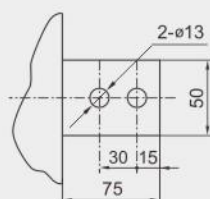
A向 Direction A



开孔尺寸图 Opening size drawing



20-400A



500-1000A

